

JAMES B. BEAM
DISTILLING CO.



BEAM MADE EXPERIENCES



ADD A DISTILLERY EXPERIENCE TO YOUR EVENT

Only in Clermont can you host the perfect event and witness the future of American Whiskey. Choose from a variety of distillery experiences to complete your event.



EVENT PACKAGES

CORPORATE

From 20 to 250 guests, from half to full days, come as colleagues leave as family. Customize your experience with meeting spaces, distillery experiences, bourbon tastings, food at the Kitchen Table, live entertainment and more.

SOCIAL

Visit the First Family of Bourbon with your friends and family. These distillery experiences bring folks together with guided bourbon tastings, immersive tours, liquid thieving, multi-course Kentucky inspired dinners and more.

WEDDINGS

The grounds of bourbon history set the scene for a historic day. Make your wedding one to remember for up to 250 guests with access to all our spaces (both indoor and outdoor), distillery tours and guided tastings, transportation and more.

JAMES B. BEAM
DISTILLING CO.



THE KITCHEN TABLE

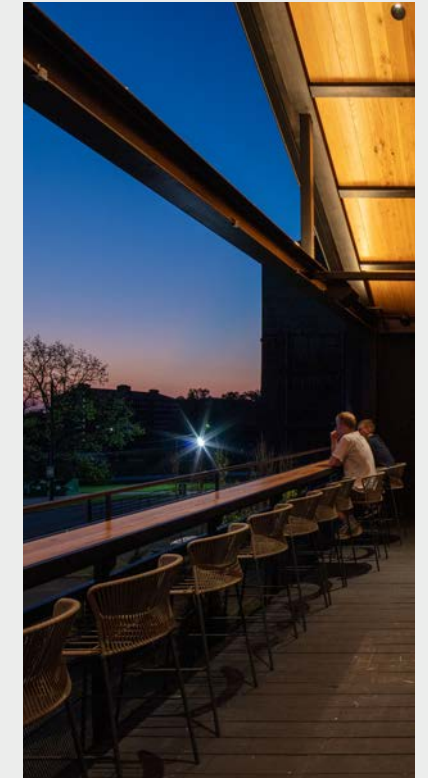
BAR & RESTAURANT

CAPACITY: UP TO 120

Some families want a fancier kitchen. All we've ever wanted is a bigger table. Built in 2022, our full-service cocktail bar and restaurant brings friends and family together for dinners, receptions, and entertaining. Here you can pull up a chair for all your guests and their plus-one.



**Inquire for pricing*



AMENITIES

- WiFi
- Speaker System (w/ Microphone)
- Two Projector Screens
- Outdoor Viewing Deck

THE KITCHEN TABLE PATIO

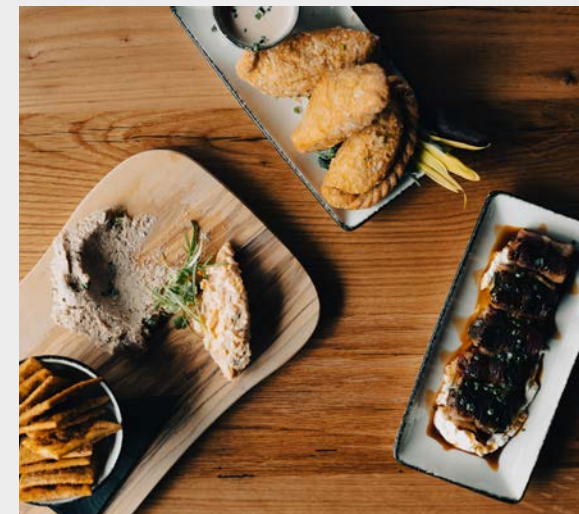
INDOOR DINING SPACE

CAPACITY: UP TO 45

The indoor patio is designed for bringing together smaller groups for private events. Guests can enjoy cocktails and plates or a buffet of modern takes on Kentucky classics. All while taking in the inspiring landscapes that surround our historic distillery.



**Inquire for pricing*



AMENITIES

- Private Dining Area
- WiFi

THE KITCHEN TABLE COURTYARD

OUTDOOR EVENT SPACE

CAPACITY: UP TO 50

Just outside the Kitchen Table, the courtyard creates an intimate setting for large get-togethers with lush landscaping and warm lighting. Host live performers from a one-of-a-kind stage and enjoy handcrafted cocktails served up at free-standing bars.



**Inquire for pricing*



AMENITIES

- WiFi
- Sound System
- Privacy
- Aesthetic Lighting
- Tables & Seating
- Bar Service Areas

THE KITCHEN TABLE EVENT LAWN

OUTDOOR EVENT SPACE

CAPACITY: UP TO 150

Kentuckians know how to turn a yard into an unforgettable event space. Our family has been doing it for over two centuries. The distillery's outdoor plaza is made for receptions, family reunions, or any big gathering. There's enough space for outdoor games, bands and toasts.



AMENITIES

- WiFi
- Power
- Sound Sytem
- Natural Grass Surface
- Bar

**Inquire for pricing*

AMERICAN OUTPOST TASTING ROOM

INDOOR EVENT SPACE

CAPACITY: UP TO 60

Give your guests a taste of history, both on our grounds and in a glass. Nestled on the top floor of the iconic American Outpost, our tasting room has enough space for a larger get-together or can be sectioned off for a more intimate setting. Add a tasting experience that features historic whiskeys to round out a memorable event.



AMENITIES

- 1 large room
- Convertible Privacy Wall
- 10 tables (60 chairs)
- Attached pantry room
- Multiple power receptacles
- WiFi

**Inquire for pricing*

BAKER BEAM HOME

CONFERENCE ROOM

CAPACITY: UP TO 22

Baker Beam was a maverick. He wasn't afraid to go his own way. In that spirit, this space is made for big thinkers and rebels of industry. Ideal for business meetings and conferences, the Baker Beam Home has everything you need to inspire your team to try things no one imagined.



- AMENITIES**
- WiFi
 - Clickshare
 - Two Projectors & Sound System
 - Kitchenette & Bathrooms

**Inquire for pricing*

COCKTAIL GROVE

OUTDOOR TERRACE

CAPACITY: UP TO 200

The yard behind the Baker Beam Home hosts large format events that stand apart. The space can remain open or be covered with a 40' x 60' tent. It's brick paved, fully powered and wide open for big views of the distillery grounds.



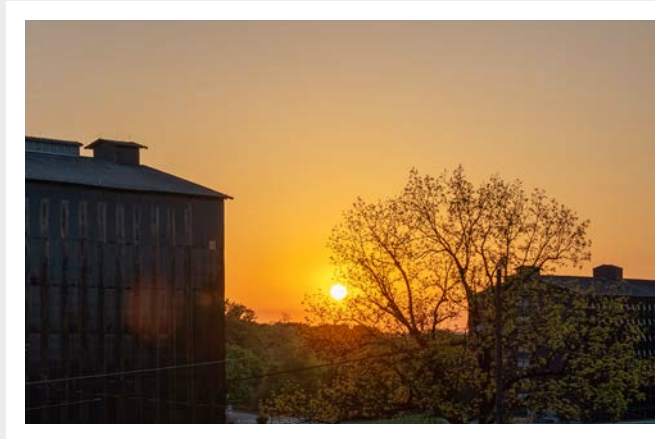
- AMENITIES**
- WiFi
 - Power
 - Water
 - Sound System
 - Solid Surface

**Inquire for pricing*

BIG LANDSCAPES. LONG SUNSETS.

THE SPIRIT OF KENTUCKY SURROUNDS THE DISTILLERY.

“Bourbon and Kentucky are one and the same.” That’s what master distiller Fred Noe said and it’s something we see everyday. Surrounded by the rolling hills of Appalachia and towering rackhouses that date back a century, the grounds where bourbon began are tried-and-true Kentucky. You can feel it on the front porch. You can taste it at the Kitchen Table. You can see it when the sun sets over hundreds of acres of history.



Long sunsets

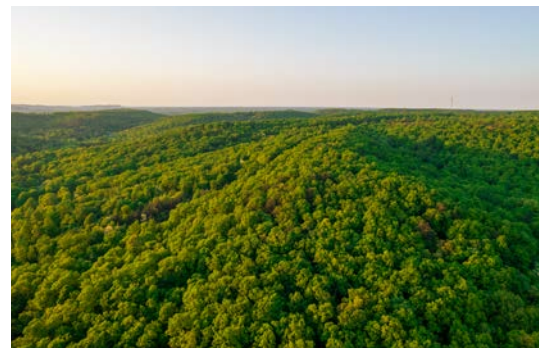


Sweeping views

Historical buildings



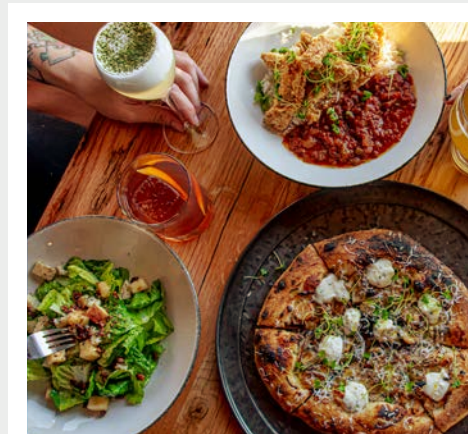
Hand-crafted cocktails



Kentucky landscape



Iconic photo opportunities



Kentucky inspired classics reimagined



Experience two centuries of distilling



STORIED BOURBONS AND GOOD STORIES.

TWO CENTURIES IN THE MAKING.

There's no hospitality like Kentucky hospitality. For over 200 years, we've welcomed friends from far and wide with the warmth of family. We open our doors, pour a couple drinks and talk on a first name basis. It'll be just like that for you and your guests during your time on the grounds of bourbon history.

Here's to seeing you soon,

Your friends at
JAMES B. BEAM DISTILLING CO.

COME AS FRIENDS, LEAVE AS FAMILY.



Fred Noe

7TH GENERATION
BEAM FAMILY DISTILLER

Freddie Noe

8TH GENERATION
BEAM FAMILY DISTILLER

Find us on



@beamdistilling

BEAMDISTILLING.COM

CONTACT INFORMATION:

For special events & group rental inquiries,
contact Trey Harris at 502-281-4521
or trey.harris@beamsuntory.com.